



Progress Engineering, LLC

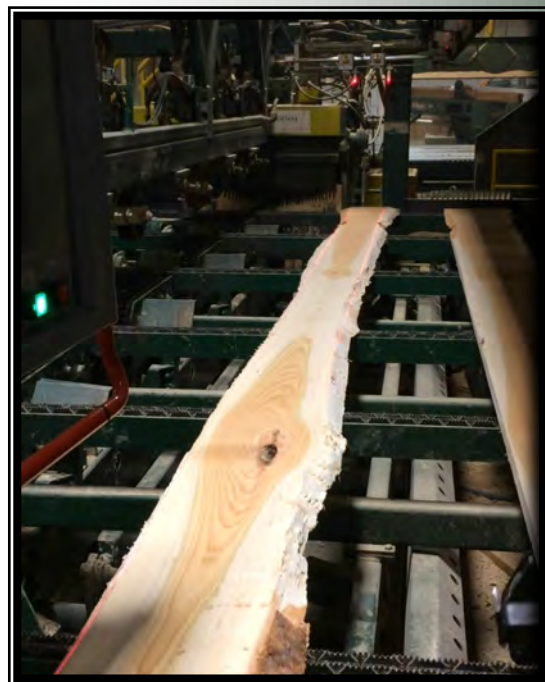
Innovation ~ Control ~ Integration

OPTIMIZED EDGER CONTROL SYSTEMS

Progress Engineering designs edger controls for most edger configurations, from manual operator networks to fully automated systems with 3D scanning and optimization.

EDGER CONTROL FEATURES

- * High performance Allen-Bradley ControlLogix hardware
- * PLC controls create a completely automated system
- * Operator interface touchscreen allows for customization and expansion
- * Multiple products per grade configurable by size and wane rules
- * Multiple grades allow for operator selection prior to scanning
- * Multiple configurable manual sets
- * Operator skew and offset adjustments
- * System alarms are displayed for operator acknowledgement
- * Maintenance diagnostics and troubleshooting right from the touchscreen



PROFESSIONAL ENGINEERS SERVING THE FOREST PRODUCTS INDUSTRY SINCE 2000

- * Hardwood and Softwood Sawmills
- * Pellet Manufacturing
- * Consumer Goods
- * Automated Log Home Manufacturing
- * Paper Products
- * Engineered Wood Products

66 Scribner Hill Road
Manchester, ME 04351
(207)623-0110
www.progresseng.com